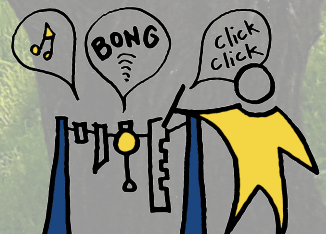


Central  
Coast  
Council



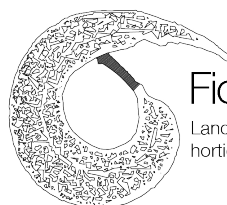
# Sun Valley Park Regional Play Space

Ideas Booklet



Prepared by

Fiona Robbé Landscape Architects  
108 Arcadia Road, Arcadia, NSW 2159  
Ph: 02 96531045



Fiona Robbé

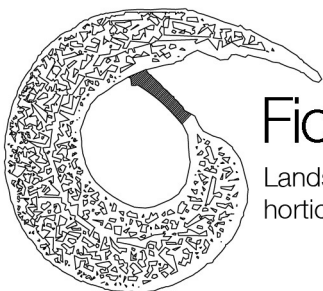
Landscape architecture,  
horticulture and playspace design

*Play is a means of learning to live, an interactive exploration of the possibilities of this world and our place in it. Instinctive, voluntary, spontaneous play is vital to develop the potential of all children.*

*We firmly commits to the notion that investment in quality play environments is one of the decisive social investments in a sustainable, peaceful, cross-cultural future. Australia is a signatory to the UN Convention on the Rights of the Child, and this project respects these principles.*

*Our design celebrates the joy and spontaneity that children bring to our lives and communicate that they are valued, important people in our society. They also welcome children and their families and carers to an environment where their needs, interests and abilities have been reflected in the landscape design.*

*We strive to uphold the theory of Universal Design to it's highest ideological interpretation – for people of all ages, abilities and ethnic origins to feel included in the play environment, and to accomplish this at all levels: socially, emotionally and intellectually. This play space richly explores the unique ambience of its setting, while intensifying the focus on children's needs and experiences in an environment of exuberance, challenge and wonder.*



**Fiona Robbé**

Landscape architecture,  
horticulture and playspace design

# TABLE OF CONTENTS

<i>PHILOSOPHY OF PLAY</i>	3
<i>CONCEPT DESIGN</i>	4

## *PLAYGROUND AREAS*

<i>Climbing</i>	6
<i>Nature Play</i>	8
<i>Water Play</i>	10
<i>Monkey Bars</i>	12
<i>Flying Fox</i>	14
<i>Swinging</i>	16
<i>Slides</i>	18
<i>Bike Track</i>	20
<i>Sensory Walkway</i>	22
<i>Sand Play</i>	24
<i>Imaginative Play</i>	26
<i>Creative Play</i>	28
<i>Nature Obstacle Course</i>	30
<i>Cognitive Challenges</i>	32
<i>Spinning</i>	34
<i>Ball Sports</i>	36
<i>Rocking</i>	38
<i>Walking/ Workout Track</i>	40
<i>Intergenerational Area</i>	42

## *SUPPORTIVE FACILITIES/AMENITIES*

<i>Accessible Parking/ Bus Bays</i>	44
<i>Accessible Picnic Areas/ Seating</i>	46
<i>Accessible Toilets</i>	48
<i>Bins/ Drinking Fountain</i>	50
<i>Perimeter Fencing</i>	52
<i>Playground Entrance</i>	54
<i>Shelter/ Shade</i>	56



**PLAYGROUND AREAS**

- |                      |                               |                                 |                               |
|----------------------|-------------------------------|---------------------------------|-------------------------------|
| <b>1</b> Climbing    | <b>8</b> Bike Track           | <b>15</b> Spinning              | <b>22</b> Accessible Toilets  |
| <b>2</b> Nature Play | <b>9</b> Sensory Walkway      | <b>16</b> Ball Sports           | <b>23</b> Bins/ Bubbler       |
| <b>3</b> Water Play  | <b>10</b> Sand Play           | <b>17</b> Rocking               | <b>24</b> Perimeter Fencing   |
| <b>4</b> Monkey Bars | <b>11</b> Imaginative Play    | <b>18</b> Walking Track         | <b>25</b> Playground Entrance |
| <b>5</b> Flying Fox  | <b>12</b> Creative Play       | <b>19</b> Intergenerational     | <b>26</b> Shelter/ Shade      |
| <b>6</b> Swinging    | <b>13</b> Nature Course       | <b>20</b> Parking/ Bus Bays     |                               |
| <b>7</b> Slides      | <b>14</b> Cognitive Challenge | <b>21</b> Picnic Areas/ Seating |                               |



CLIMBING





## CLIMBING

Climbing will be provided in two options:

- Advanced climbing
- Junior climbing





NATURE PLAY







## *NATURE PLAY*

.....  
A natural graduated balance challenge to cater for varying skillsets.





*WATER PLAY*





## WATER PLAY

.....  
A water play tap or hand pump providing a small trickle of water onto a sandstone slab, meandering into a sandpit.





*MONKEY BARS*







*FLYING FOX*





## *FLYING FOX*

A dual flying fox providing an offer of side-by-side play.





SWINGING







## SWINGING

Swing options including toddler seats, strap seats, inclusive boat seats, you + me swing and nest seat.





*SLIDES*





## *SLIDES*

Slides provided at various heights off a deck or raised walkway.





*BIKE TRACK*





## BIKE TRACK

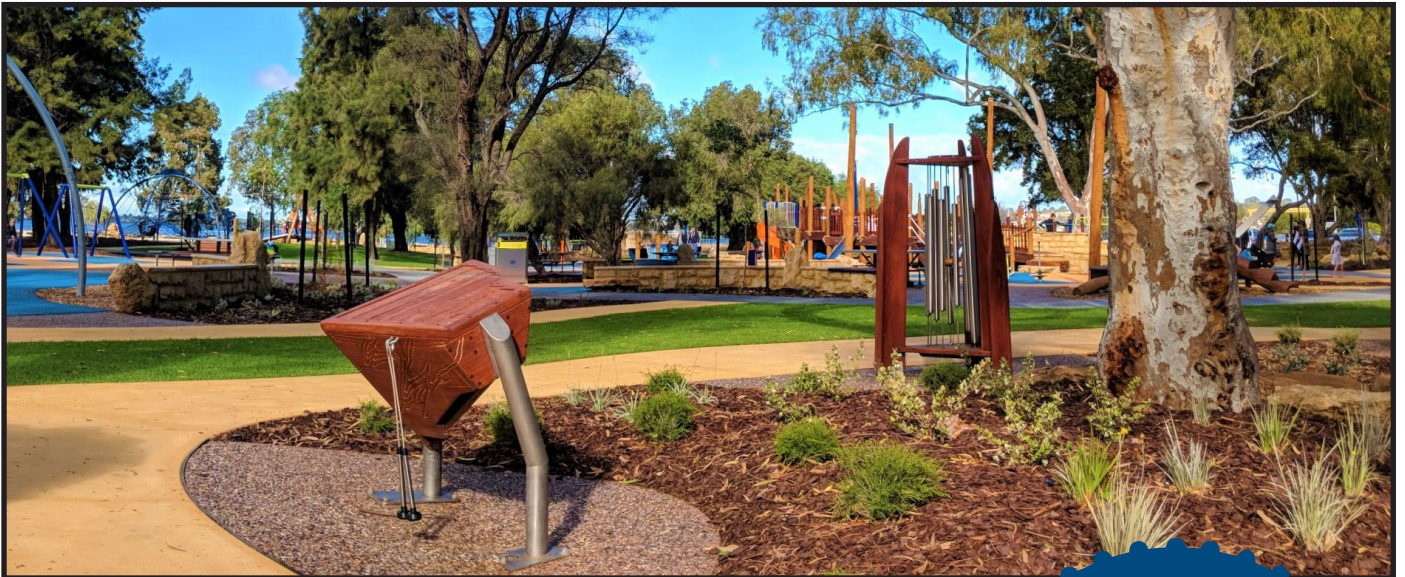
Dedicated learn-to-ride bike area including wall turns, rumble strips and petrol bowser. Learner track and advanced skills track.





*SENSORY WALKWAY*





## *SENSORY WALKWAY*

.....  
Sensory walkway including music play, sensory-rich planting and mirrors.





*SAND PLAY*

10

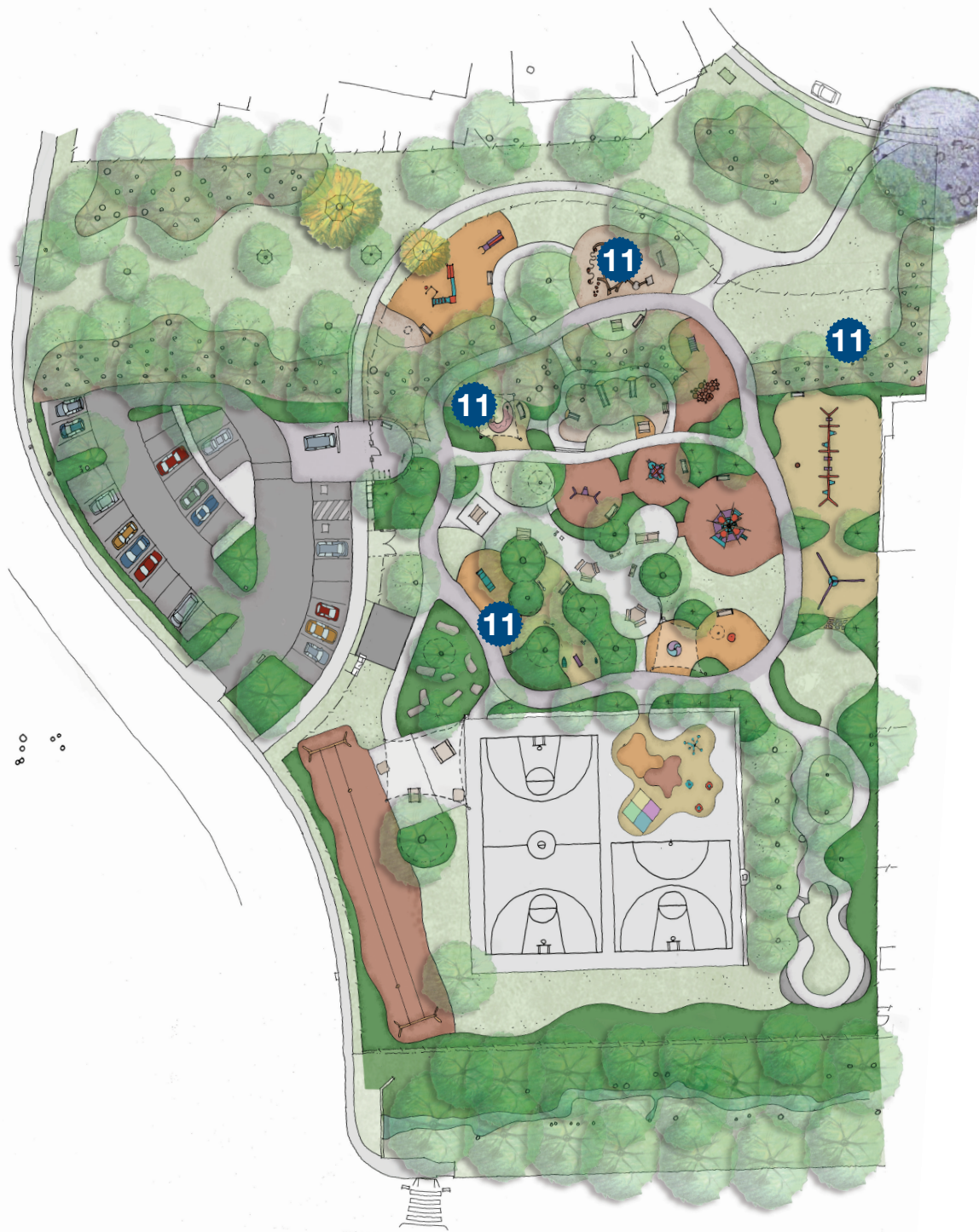




## SAND PLAY

.....  
A wheelchair-accessible sandpit with sandstone play table and water play tap.





*IMAGINATIVE PLAY*





## IMAGINATIVE PLAY

Imaginative play pieces provide children with settings to spark imaginative play.





*CREATIVE PLAY*





## *CREATIVE PLAY*

Natural items such as branches, bark and sand promote creative play outcomes.





NATURE OBSTACLE COURSE





## NATURE OBSTACLE COURSE

.....  
Sandstone boulders placed creatively to climb, jump,  
run and hide in.





*COGNITIVE CHALLENGES*







## COGNITIVE CHALLENGES

Ground markings including puzzles, handball and movement games.





*SPINNING*

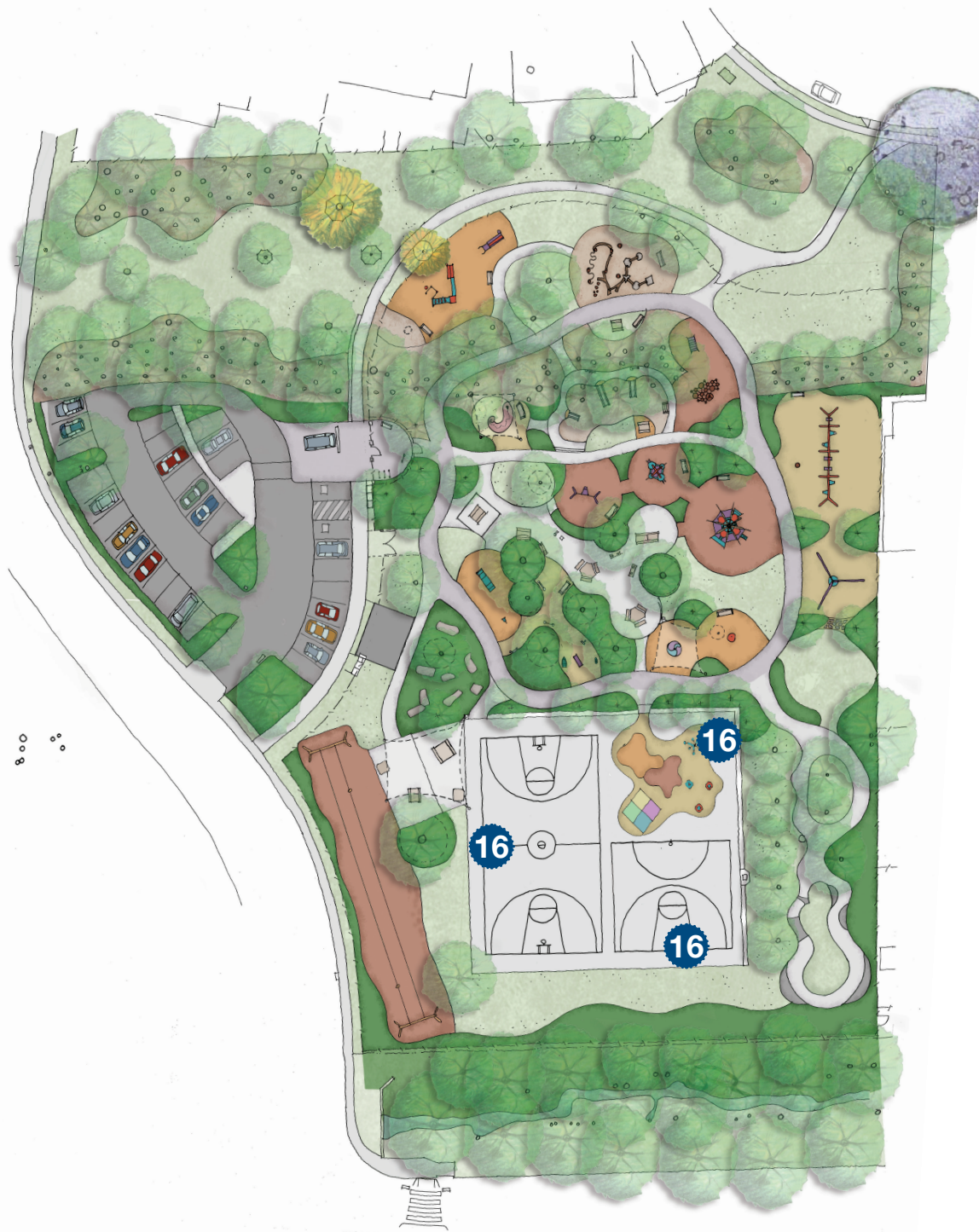
15



## SPINNING

A variety of spinning options including solo spinning, group spinning and a wheelchair-accessible spinner.





*BALL SPORTS*





16

## BALL SPORTS

A range of ball sports activities, including;

- Full size basketball court
- Half size netball + basketball courts
- Ball toss towers at various heights



ROCKING

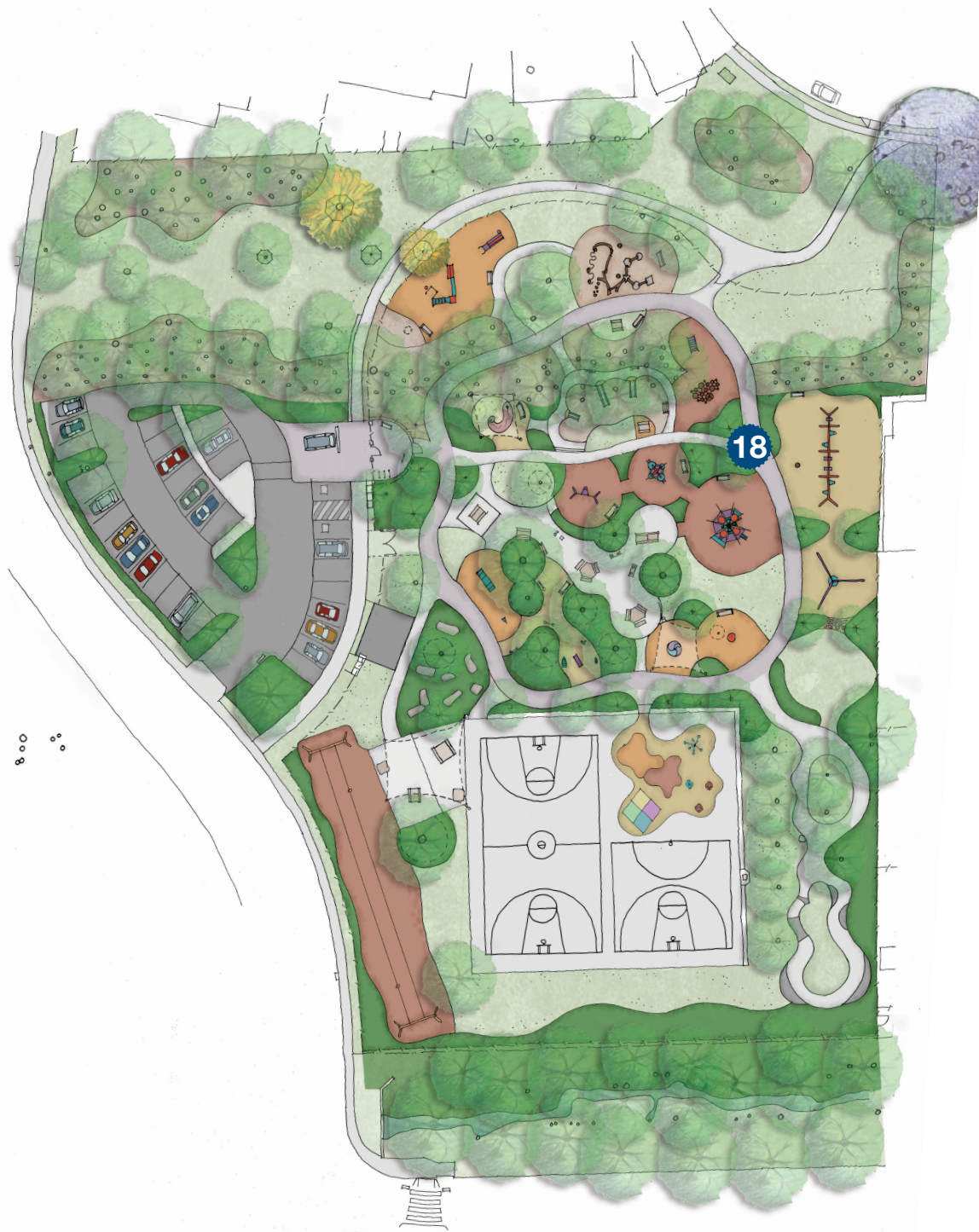
17



## ROCKING

Inclusive rocking provided for both group and solo play.





*WALKING/WORKOUT TRACK*

.....



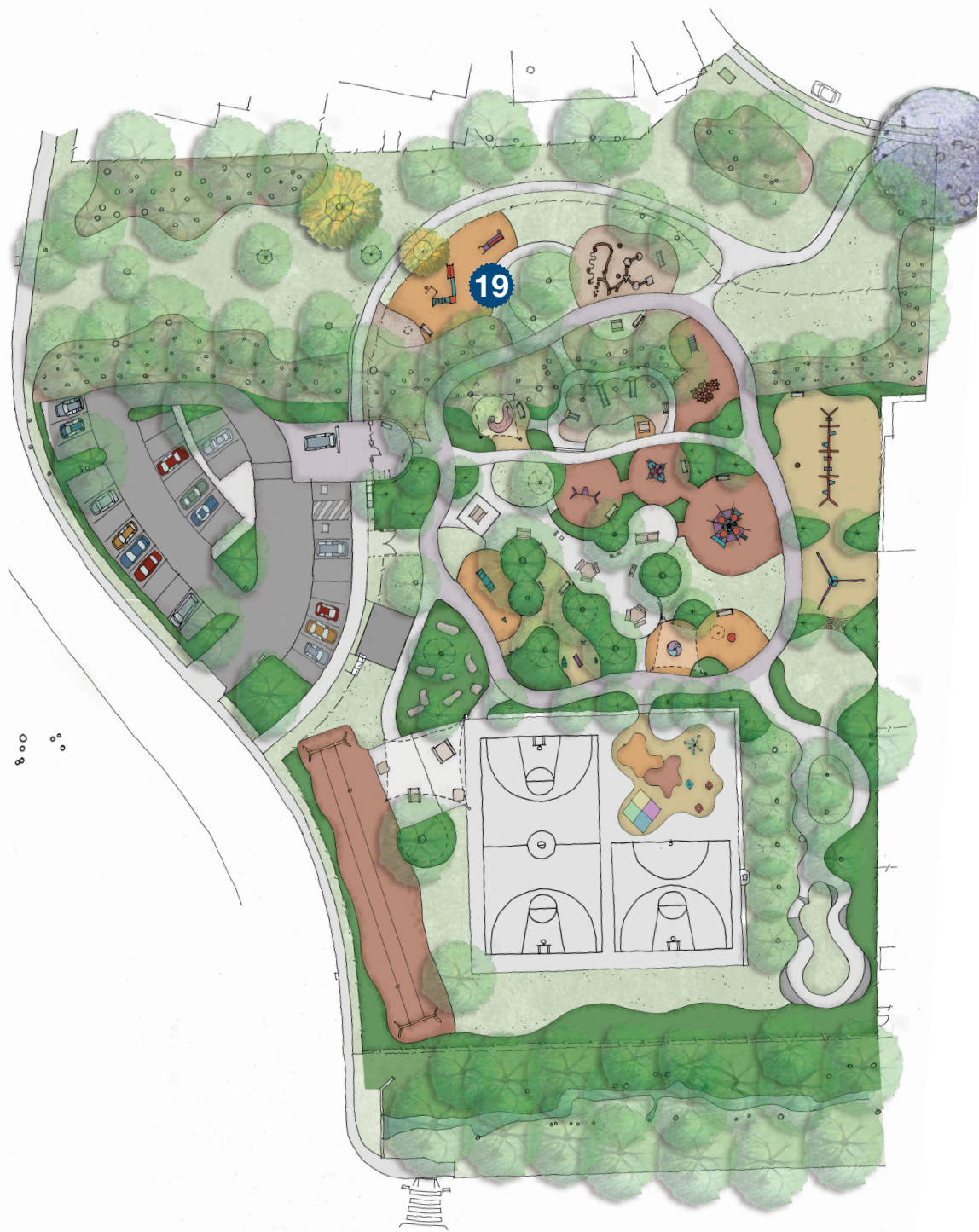




## *WALKING/WORKOUT TRACK*

Walking/ workout track meandering through trees, sometimes elevated, with interval markings.





INTERGENERATIONAL





## *INTERGENERATIONAL AREA*

Equipment to practice co-ordination, agility and balance.





*ACCESSIBLE PARKING/BUS  
BAYS*

20



## ACCESSIBLE PARKING/BUS BAYS

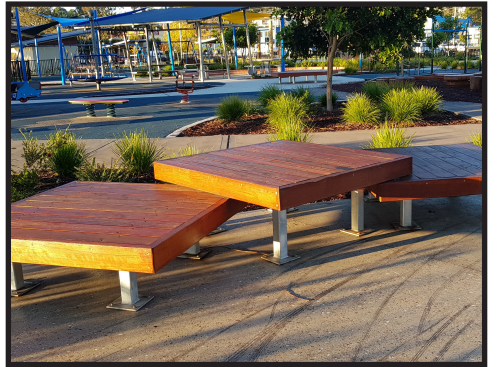
Accessible parking and bus bays provided in close proximity to the play space entrance.





*ACCESSIBLE PICNIC AREAS/  
SEATING*





## ACCESSIBLE PICNIC AREAS/ SEATING

A variety of seating is provided:

Accessible picnic tables, accessible barbecues, seats with backs and arm rests, and platform tables.





*ACCESSIBLE TOILETS*







## ACCESSIBLE TOILETS

.....  
Amenities for all to use. The toilet block straddles the fence so access is both from within the playground fenced area, and from the carpark.





*BINS/ DRINKING FOUNTAIN*

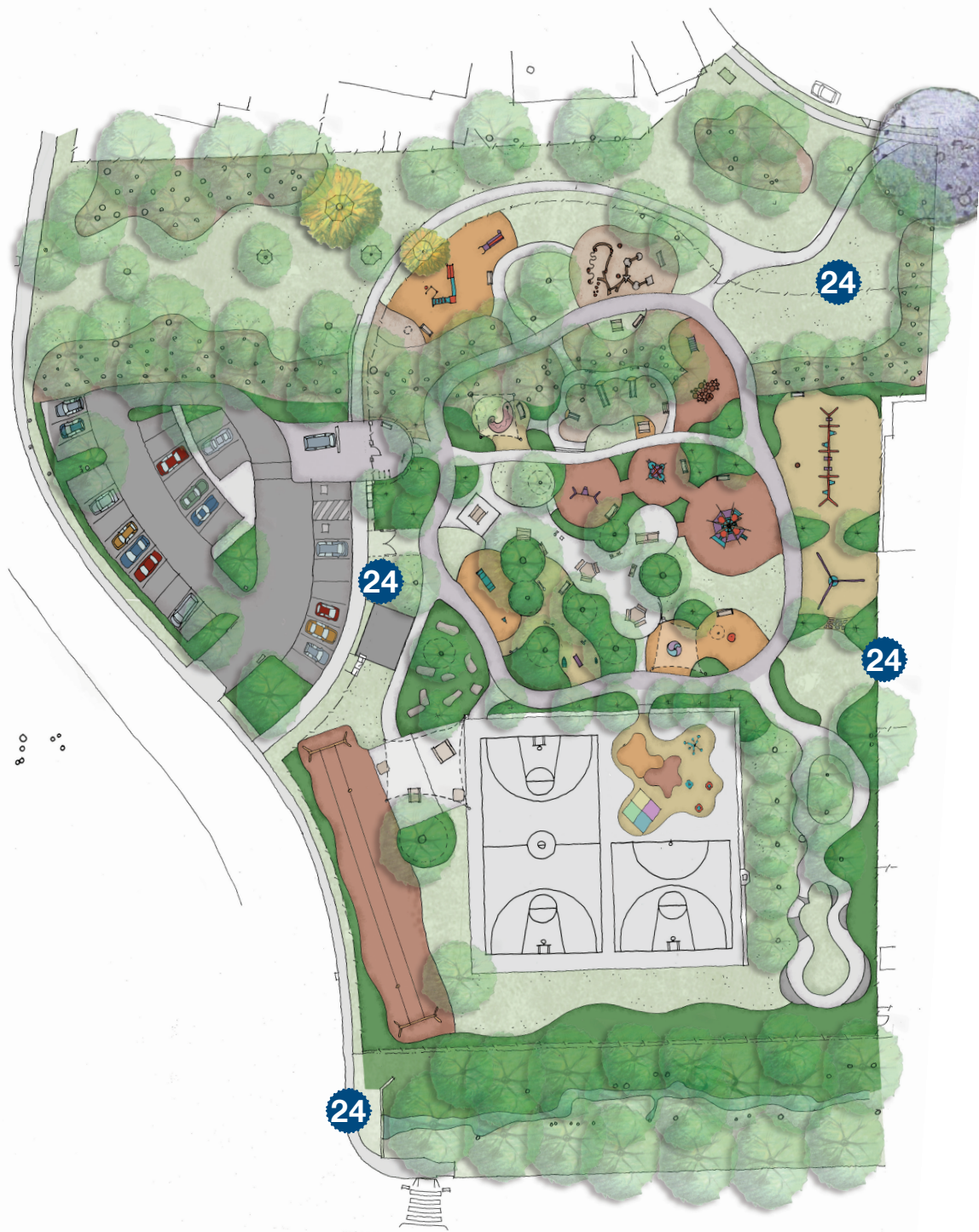
23



## *BINS/ DRINKING FOUNTAIN*

Child-friendly bin with step up block and accessible drinking fountains with bottle filling point.





*PERIMETER FENCING*





## *PERIMETER FENCING*

1200mm high perimeter fencing provides a secure play area. The fencing circumnavigates the whole area.





*PLAYGROUND ENTRANCE*





## PLAYGROUND ENTRANCE

The main entry is highlighted through use of height, colour and signage. The main entry will be clearly visible and identifiable.





*SHELTER/SHADE*

26





## *SHELTER/SHADE*

Natural and artificial shade is provided throughout the play space. Areas of high use and long stays will have shade sails overhead. Additional trees will also be planted.

