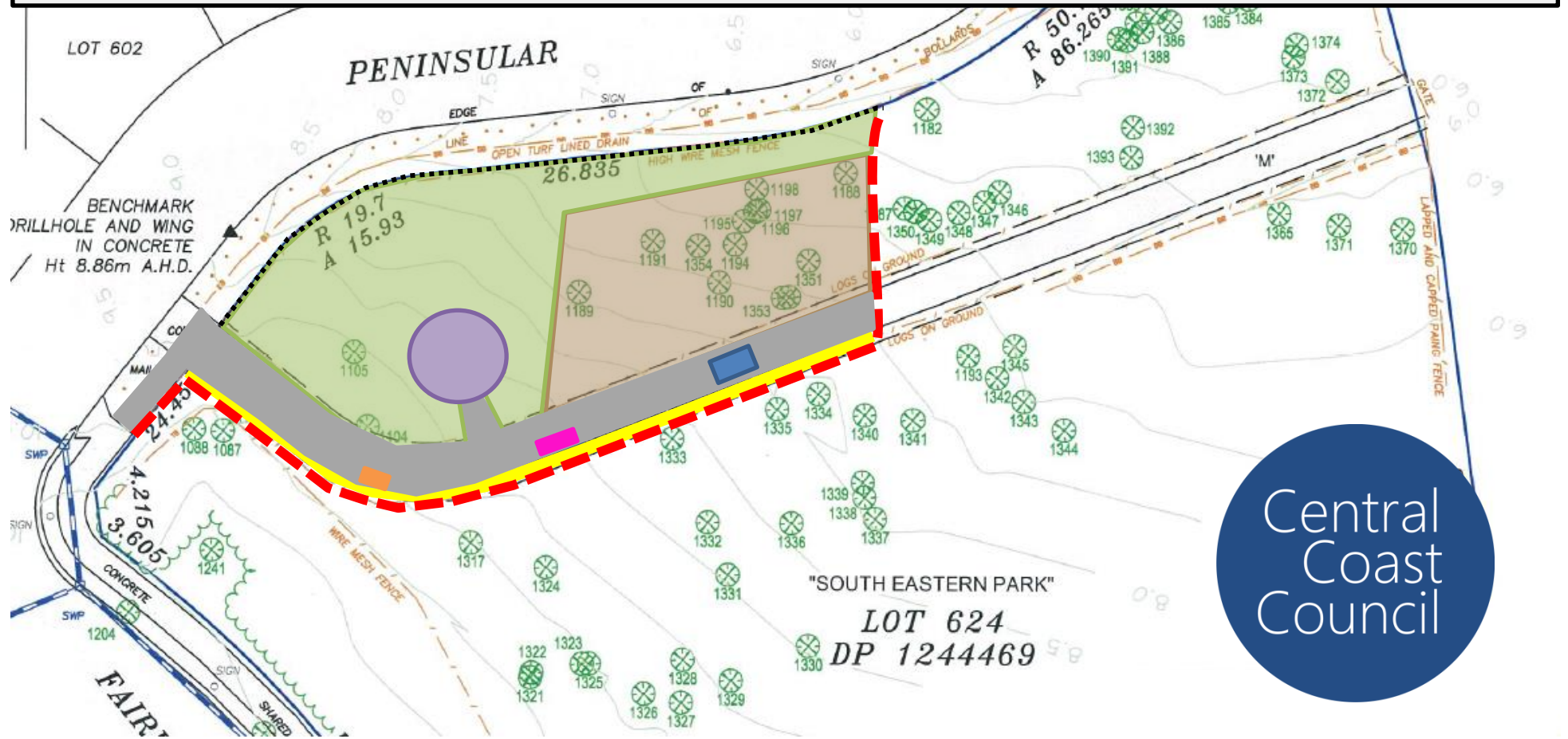
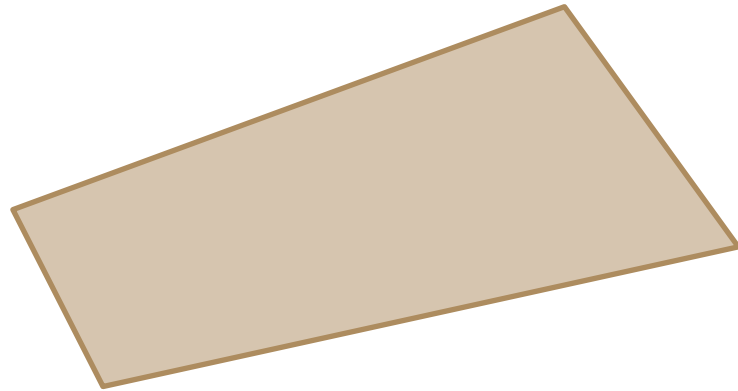


South Eastern Park, Gwandalan

Concept Design



Nature Play



=

A unique custom design nature play experience will provide children the freedom to explore, create and discover without predetermined rules or guidelines.

The playspace will benefit from the retention of existing trees which will provide a large shade canopy. The undergrowth will be cleared and replaced with certified playground mulch to compliment the natural environment for children to enjoy.



Established trees retained within playspace and incorporated into design for authentic nature play experience.

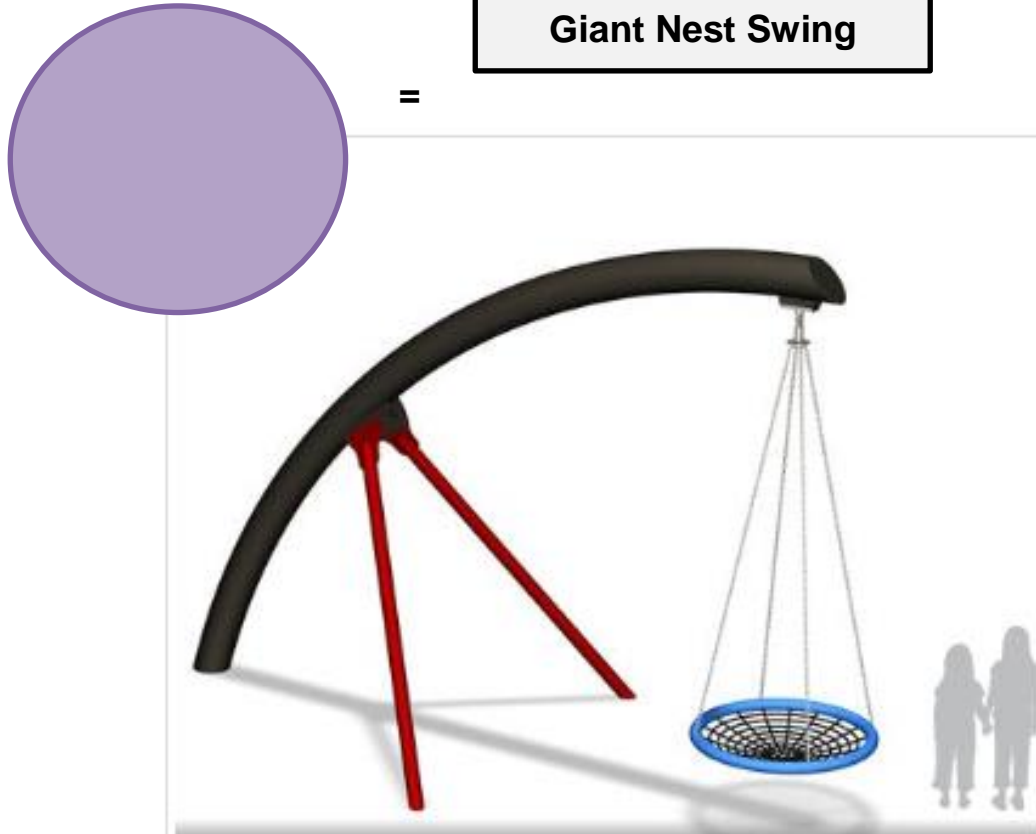


Challenge and adventure with nature inspired boulders linked by a combination of nets and ropes



Existing logs from site to be utilised within playspace design to create tangled log nest

Giant Nest Swing



An all accessible and inclusive giant nest swing will provide a sense of flying through the tree tops.

Accessible Pathways

A concrete shared pathway at the entry to South Eastern Park will be complimented by new areas into and around the Playspace.

Accessible pathways will connect the Giant Nest Swing, bench seating, picnic settings, waste and recycling bins and various educational signage.

ACCESSIBLE PATHWAYS

Educational

Significant interpretive/education signage to highlight the ecological values will be contained within the nature playspace.

An extensive signage range will include:

- Welcome to South Eastern Park
- Use Your Senses signage
- Fauna Crossing information
- Nest Boxes information
- Individual tree species signage
- Protected species signage



Fauna Crossing



A Fauna Crossing will be installed to allow animals to cross safely between the new playspace and the protected areas to the South including;

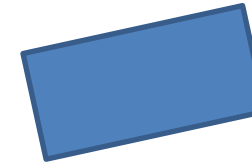
- Tetratheca Juncea habitat
- Swamp Sclerophyll Forest Endangered Ecological Community (SSF EEC)
- Riparian Corridor

Furniture

A combination and range of seating, tables and rubbish bin enclosures will be supplied and installed as part of the playspace design and construction.



=



Timber picnic table setting positioned within playspace to be under canopy of established trees, accessible by shared pathway.



=

Waste and Recycling bins that are regularly emptied to minimise food waste that may attract animals (pest and native) and reduce litter entering retained native vegetation.

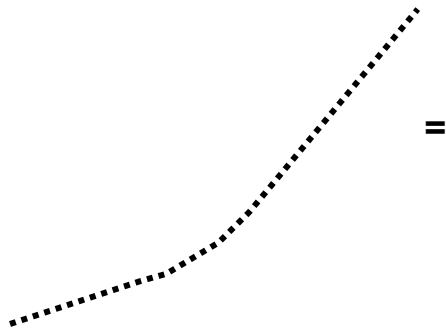


=

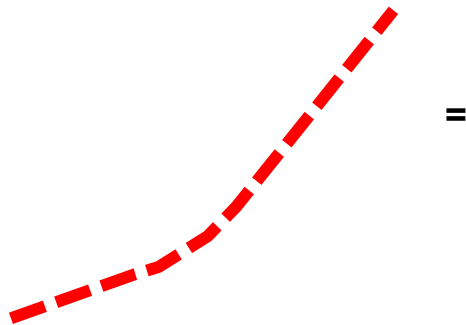


Timber bench seating with backrest and arms positioned alongside accessible pathway.

Fencing



The existing 1.8 metre chain wire fencing with green mesh will be removed from the front of the playspace and replaced with 1.2m high playground fencing to separate the playspace and traffic travelling along Peninsular Drive.

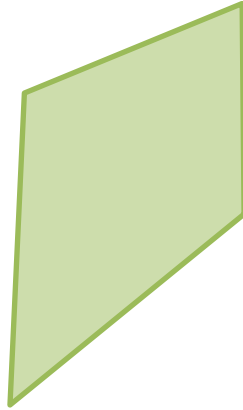


The southern boundary of the playspace will be fenced using 1.8 metre chain wire fencing to deter public access into the protected areas. Fencing will connect to existing fencing along the eastern side of Fairwater Drive.

Open Space

A large area, cleared of existing undergrowth will be allocated for an open space, turfed area and shade provided by the retention of established trees.

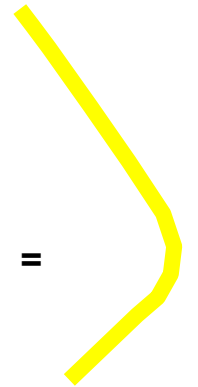
=



Planting



=



Landscape species with dense plantings along the fencing to further deter access and reduce edge effects will be selected from those naturally occurring on the site with a preference for feed species for the threatened Squirrel Glider.